



GAT MONTHLY MEMBERSHIP PROGRESS REPORT

Results as of: 4/30/2022

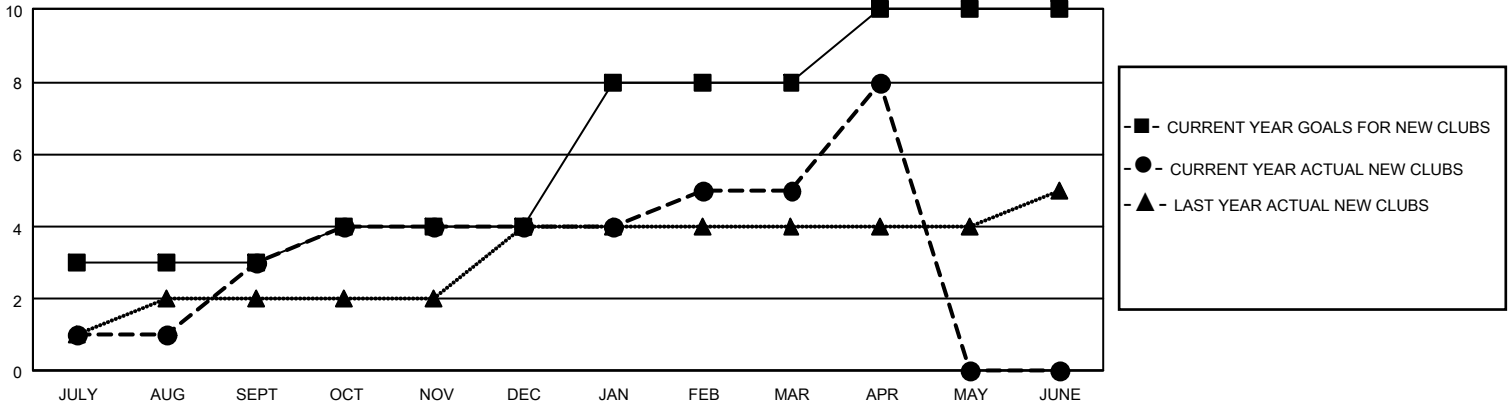
GMT Constitutional Area 3, Group J

REPORT DOES NOT INCLUDE CLUBS IN UNDISTRICTED AREAS.

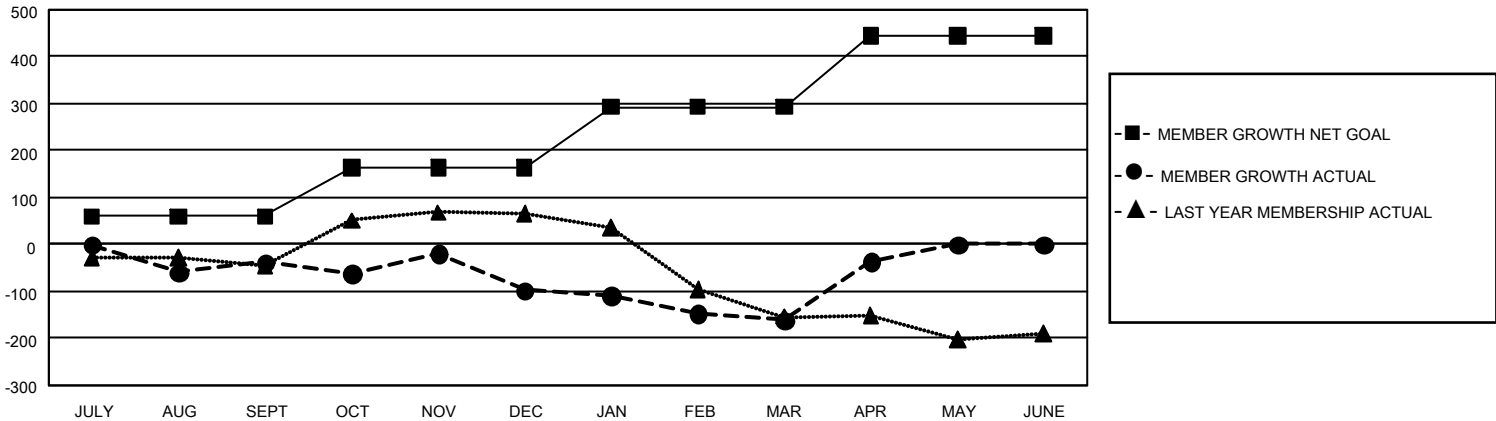
Clubs			
RESULTS FOR 2021-2022			
QUARTER	NEW CLUB GOAL	NEW CLUBS	DROPPED CLUBS
JULY/AUG/SEPT	9	3	5
OCT/NOV/DEC	3	1	3
JAN/FEB/MAR	12	1	2
APR/MAY/JUNE	6	3	0

Members			
RESULTS FOR 2021-2022			
QUARTER	MEMBER GROWTH NET GOAL	MEMBER GROWTH ACTUAL	DROPPED MEMBERS ACTUAL (including transfers)
JULY/AUG/SEPT	60	170	185
OCT/NOV/DEC	103	244	279
JAN/FEB/MAR	130	123	148
APR/MAY/JUNE	151	173	39

GOALS AND ACTUAL NEW CLUBS CUMULATIVE



GOALS AND ACTUAL MEMBERS CUMULATIVE



DROPPED CLUBS: 9	88 CLUBS OF 203 ADDED 1 OR MORE NEW MEMBERS	<u>GENDER DISTRIBUTION</u>	
<u>DROPPED MEMBERS</u>		MALE	2,858 (55.23%)
DECEASED	59	FEMALE	2,317 (44.77%)
CLUB CANCELLED	110	NON BINARY	0 (0.00%)
OTHER	482	PREFER NOT TO ANSWER	0 (0.00%)
TOTAL	651	TOTAL FAMILY UNIT MEMBERS	2,164
	CLICK HERE FOR CUMULATIVE MEMBERSHIP DATA	FAMILY MEMBERS PAYING HALF DUES	1,139